

Experience a new height of efficiency

The ECOSYS MA4000wifx series adapts to your challenges.



ECOSYS MA4000wifx/ MA4000fx/ MA4000x
ECOSYS MA3500wifx/ MA3500fx/ MA3500x
ECOSYS PA4000wx/ PA4000x
ECOSYS PA3500wx/ PA3500x

**Monochrome Multifunction Printers and Printers
for A4 Format**

Optimise your business with **ECOSYS MA4000wifx series**

Space-saving monochrome multifunction devices designed to enhance productivity through flexibility, functionality, and reliability, all while minimizing environmental impact, making them perfect for high-performing workgroups.

With the ECOSYS MA4000wifx series you get:

- Speedy A4 print to 40 pages ppm.
- 5GHz Wireless LAN featuring Wi-Fi Direct support.
- Reduced operating costs with cutting-edge, durable technology.
- Easy-to-use design ideal for installation in compact spaces.
- Performance improvement by changing the controller system.
 - Improve printing performance for PDF data.
 - Improve the number of continuous scanning pages.
 - Improve scanning speed for duplex documents.



Evolution of ECOSYS

ECOLOGY - Providing energy-saving, silent design and compact design, realize top-class environment support in the industry.

ECONOMY - Providing lower CPP and longer life-time design, enhance TCO competitiveness.

SYSTEM - Provide reliable machines by assuring compatibility with the legacy machines / improvement of stable operation / adding the function of streamlining duties

KYOCERA Document Solutions strives to be a company that contributes to the society and demonstrates a "Customer First" principle by providing customers with maximum value to increase their satisfaction. By adhering to the mission of producing document management devices that take balance between "Economy" and "Ecology", KYOCERA Document Solutions succeeds to develop document management devices with advanced technologies which help customers to optimize office productivity and efficiency at a low total cost of ownership and, at the same time, improving environmental performance.



Improved features for daily tasks

Enhance printer visibility

5-line LCD panel makes it larger and easier to see. It also makes it easy to type using the numeric keypad.



** Available on printer models.*

Capturing A6-sized documents

The duplex automatic document feeder enables quick scanning of A6 payment slips, delivery notes, and invoices for same-day digital processing, enhancing workflow efficiency.



Multiple cropping

Equipped with a multi-crop function* that allows you to scan multiple documents at once by arranging them on the platen (glass surface). Receipts and business cards can be efficiently converted into electronic data.

** Only available on ECOSYS MA4000wifx (compatible with HyPAS model)*

** An additional HyPAS application and SD card are required.*



Scan up to 10 sheets at once



Autosave by page or file

Simple Installation

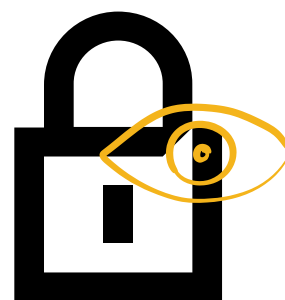
Add "Wi-Fi Easy Setup" to the "Network Selection" section of the initial setup wizard to assist users unfamiliar with MFPs. This feature allows Wi-Fi configuration through the "Kyocera Printer Setup Tool" on computers or mobile devices, removing the need for USB cables or the WPS button. It is also accessible in the system menu.



**This is a sample QR code.*

Secure Your Business

Guards against malware and prohibit the execution of unknown programs, while mitigating security risks with document information leakage prevention.



- + Keep your system updated

Your equipment is monitored 24/7, and firmware updates are automatically applied remotely to keep it current and secure*.

** KFS(KYOCERA Fleet Services) or Service Contract is required.*

- + Watermark Printing

Watermark printing is visible only on copies, distinguishing originals from duplicates and protecting against information leaks.

- + Prevents unauthorized software interference

Harmful programs like viruses can't function without the necessary permissions, preventing infections and allowing you to use the machine worry-free.

- + Restrict access

Enhance printer security by configuring the IP filter to restrict access to your network and block unauthorized users.



Streamlining Business Process

The MA4000wifx is compatible with HyPAS™, a Kyocera-developed software platform that expands your MFP's core capabilities with powerful customisation.



- + KYOCERA MyPanel
Remote control designated KYOCERA printing devices by smartphone or tablet.



- + KYOCERA Net Manager*
Control sensitive documents and reduce printing costs.

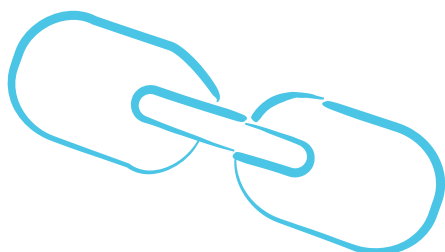


- + KYOCERA Mobile Print
Conveniently print files, web pages and images using smartphone or tablet.



- + Kyocera Cloud Print and Scan*
Models not using the HyPAS platform can still connect to KCPS, allowing users to access features like cloud scanning, cloud printing, user management, and print management.

** KYOCERA Net Manager and Kyocera Cloud Print and Scan are paid solution.*

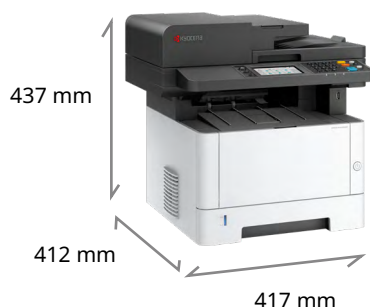


Simplify Document Workflow

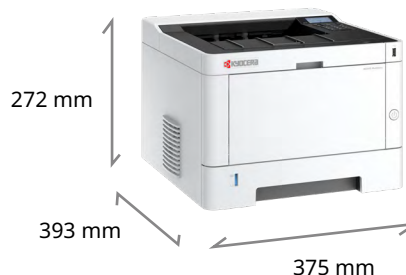
These highly productive monochrome multifunctionals support business workgroup of all sizes by packing power and productivity in a small footprint. They deliver flexibility, high level of functionality and advanced reliability while reducing environmental impact which make them ideal for workgroups seeking for superior performance.



A4 Monochrome Multifunction Printers



A4 Monochrome Printers



Superior Functions

Standard Document Processor
Support Dual Scan and
A6 Duplex Scan
(e.g. A6 Bank Slip)

** Available on 40ppm models*

Easy-to-use

4.3-inch touch LCD panel*
With built-in HyPAS technology

** Only available on model
ECOSYS MA4000wifx*

Smart Design

Prevent envelop wrinkles,
paper jam; and
easy jam clearing

Speedy A4 copy/print

Reaching up to
35 cpm and 40 cpm

Compact Size

Small footprint to fit
inside office space

High Flexibility

Handle max. 850 sheets
Multi-Purpose Tray x1;
Standard Paper Feeder x1;
PF-1100 Paper Feeder x2
(Optional)





Eco-friendly

Long life design

Enhances resource conservation by using a long-life drum, reducing the need for frequent replacements and accumulation of discarded components.



Eco-friendly Packaging

Through the use of environmentally friendly materials that are easily recyclable, we have improved the cushioning and packaging durability of both the main unit and toner using innovative techniques.



Improved Quietness

By reviewing the cooling structure, quietness during machine operation has been further improved, allowing it to not interfere with the work in a quiet office. In addition, "Quiet mode" can provide an even more comfortable experience.



52dB (A)

Improved Sleep Mode Power Consumption

Equipped with the latest controller to reduce power consumption during sleep and contribute to energy saving.

*For ECOSYS MA4000wifx series and ECOSYS MA3500wfx series: 0.4W;
ECOSYS PA4000wx series and ECOSYS PA3500wx series: 0.3W



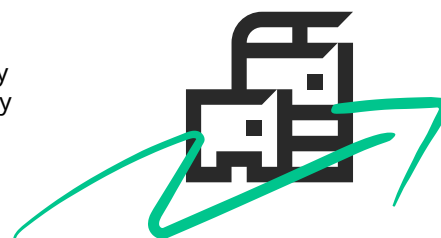
0.4 W



0.3 W

Energy-efficient design.

The upgraded planar heater fuser is now optimized for compatibility with monochrome medium-speed machines, improving its efficiency in converting electrical energy into thermal energy and resulting in superior energy-saving performance.



Main Specifications							
Model		ECOSYS MA3500x	ECOSYS MA3500fx	ECOSYS MA3500wfx	ECOSYS MA4000x	ECOSYS MA4000fx	ECOSYS MA4000wfx
Main Function		Copy, Print, Scan, Fax (ECOSYS MA4000fx/MA4000wfx/MA3500fx/MA3500wfx only)					
Processing Method		Laser exposure dry electrostatic transcription					
CPU		ARM Cortex A53 single 1.0GHz					
Print Speed (A4) (Mono)		35 ppm			40 ppm		
Scanning Speed (A4) Simplex/ Duplex (Mono/Color)	300dpi	Simplex (Mono/Color): 40ipm/23ipm, Duplex(Mono/Color): 80ipm/46ipm					
	600dpi	Simplex (Mono/Color): 18ipm/7ipm, Duplex(Mono/Color): 36ipm/14ipm					
Memory		Standard 1GB (Max. 1GB)					Standard 2GB (Max. 2GB)
Warm Up Time		19 seconds					29 seconds
Paper Capacity	Standard	250 sheets (Cassette) + 100 sheets (MPT)					
	Maximum	850 sheets (Main Unit + 250 sheets PF-1100 x2 + MPT)					
Paper Size	Cassette	Min. A6R - Max. A4 (Legal)					
	Option	Min. A6R - Max. A4 (Legal)					
	MPT	Min. 70mm x 148mm - Max. A4 (Legal)					
Paper Weight	Cassette	60 - 163 g/m ²					
	Option	60 - 163 g/m ²					
	MPT	60 - 220 g/m ²					
Duplex Printing		Paper size: A5R - A4/Legal; Paper weight: 60 - 163 g/m ²					
Output Capacity		Max. 150 sheets face-down					
Control Panel		5 lines LCD (128(W) x 64(H) Dot display)					4.3 inch Color Touch LCD Panel
Document Processor		Standard (Max. 50 sheets ADF Type)			Standard (Max. 50 sheets DSDP Type)		
Dimension (W x D x H) (Main Unit)		417mm x 412mm x 437mm					
Weight (Main Unit)		Approx. 19.0kg *excluding the toner container					
Power Consumption (Standard configuration)	Copy/Print Mode	534.4 W			574.4 W		
	Stand-by Mode	10.8 W				11.8 W	
	Energy Saver	0.4 W					
Noise (ISO7779/ ISO9296)	Copy/Print Mode	52dB(A); Quiet Mode: 48dB(A)					
	Stand-by Mode	29dB(A)					
		Copy Functions (Standard)					
Copy Size		Min. 100mm x 148mm - Max. A4 (Legal)					
Resolution		600 x 600 dpi					
First Copy Time		6.4 seconds or less					
Zoom Ratio (Manual)		25% - 400% (1% per Step)					
Multiple Copy		1 – 999					
		Print Functions (Standard)					
Resolution		300 x 300 dpi, 600 x 600 dpi, Fast1200, Fine1200					
PDL/Emulations		PCL6 (PCL5e, PCL-XL), KPDL3 (Postscript 3 compatible), PRESCRIBE, Line Printer, IBM Proprinter, Epson LQ-850, PDF Direct Print					
First Print Time		6.4 seconds or less					
Interface		USB 2.0 High Speedx1; Ethernet 10BASE-T/100BASE-TX/1,000BASE-T; USB Host Interface (USB Host)x1; 802.11b/g/n/ac/Wireless LAN/WiFi Direct (For ECOSYS MA3500wfx and MA4000wfx only)					
Network Printing		TCP/IP, FTP, LPR, Port9100, NetBEUI, Apple Bonjour					
E-mail printing		Data printing of E-mail received data Data format : PDF, PS, Text, TIFF, JPEG, XPS, OpenXPS					
Secure printing		IPP over TLS					
Mobile Printing		AirPrint, Mopria, KYOCERA Mobile Print. KYOCERA MyPanel					
		Scan Functions (Standard)					
Send Size		Min. 50mm x 50mm - Max. A4 (Legal)					
Resolution		600dpi, 400dpi, 300dpi, 200dpi, 200x400dpi, 200x100dpi, 1200x1200dpi (Only TWAIN driver and WIA driver)					
File Format		TIFF, JPEG, XPS, OpenXPS, PDF (MMR/JPEG/High-compression PDF), PDF/A					
Image Type Mode		Text, Photo, Text + Photo, Light text + Fine line, Text (for OCR)					
Transmission Type		Scan to SMB; Scan to E-mail ; Scan to FTP or FTP over TLS; Scan to USB; TWAIN Scan; WSD Scan, WIA Scan					
Address Storage		300 addresses (Common address list), 50 groups (Group address list)					
		Fax Functions (ECOSYS MA4000fx/MA4000wifx/MA3500fx/MA3500wfx only)					
Original Size		Min. A6R - Max. A4 (Legal)					
Coding Method		MMR, MR, MH, JBIG					
Transmission Speed		33.6 kpbs					
Transmission Time		3 sec. or less					
Network FAX		Yes					
		Consumables & Options					
Toner Kit (Page Yield in accordance with ISO/ IEC 19752)		TK-1295 (3,000 pages)			TK-1275 (7,200 pages) TK-1285 (12,000 pages)		
Capacity of Start up Toner		1,000 pages			3,600 pages		
Maintenance Kit		MK-1295 (60,000 pages) (Except Taiwan, Korea, Philippines)			MK-1265 (70,000 pages) (Except Taiwan, Korea, Philippines)		
Paper Feeder		PF-1100: 250 sheets (Max. x2)					
Card Authentication		Card Authentication Kit(B)					

* Fax function only available on models ECOSYS MA3500fx, MA3500wfx, MA4000fx and MA4000wfx.

Main Specifications					
Model		ECOSYS PA3500x	ECOSYS PA3500wx	ECOSYS PA4000x	ECOSYS PA4000wx
Type		Desktop			
Processing Method		Laser exposure dry electrostatic transcription			
Print Speed (A4) (Mono)		35 ppm		40 ppm	
First Print Time		6.4 seconds or less			
Warm Up Time		15 seconds			
Resolution		300 x 300 dpi, 600 x 600 dpi, Fast1200, Fine1200			
Duplex Printing		Paper size: A5R - A4/Legal; Paper weight: 60 - 163 g/m ²			
Control Panel		5 lines LCD (128(W) x 64(H) Dot display)			
Power Consumption (Standard configuration)	Copy/Print Mode	481.3 W		555.9 W	
	Stand-by Mode	6.0 W			
	Energy Saver	0.3 W			
Noise (ISO7779/ ISO9296)	Copy/Print Mode	52dB(A); Quiet Mode: 48dB(A)			
	Stand-by Mode	29dB(A)			
Dimension (W x D x H) (Main Unit)		375mm x 393mm x 272mm			
Weight (Main Unit)		Approx. 14.0kg *excluding the toner container			
		Controller			
CPU		ARM Cortex A53 single 1.0GHz			
Memory		Standard 512MB (Max. 512MB)			
Interface		USB 2.0 High Speedx1; Ethernet 10BASE-T/100BASE-TX/1,000BASE-T; USB Host Interface (USB Host)x1; 802.11 b/g/n/ac/ Wireless LAN/WiFi Direct (For ECOSYS PA3500wx and PA4000wx only)			
PDL/Emulations		PCL6 (PCL5e, PCL-XL), KPDL3 (Postscript 3 compatible), PRESCRIBE, Line Printer, IBM Proprinter, Epson LQ-850, PDF Direct Print			
Network Printing		TCP/IP, FTP, LPR, Port9100, NetBEUI, Apple Bonjour			
E-mail printing		Data printing of E-mail received data Data format : PDF, PS, Text, TIFF, JPEG, XPS, OpenXPS			
Secure printing		IPP over TLS			
Mobile Printing		AirPrint, Mopria, KYOCERA Mobile Print, KYOCERA MyPanel			
		Paper Handling			
Paper Capacity	Standard	250 sheets (Cassette) + 100 sheets (MPT)			
	Maximum	850 sheets (Main Unit + 250 sheets PF-1100 x2 + MPT)			
Paper Size	Cassette	Min. A6R - Max. A4 (Legal)			
	Option	Min. A6R - Max. A4 (Legal)			
	MPT	Min. 70mm x 148mm - Max. A4 (Legal)			
Paper Weight	Cassette	60 - 163 g/m ²			
	Option	60 - 163 g/m ²			
	MPT	60 - 220 g/m ²			
Output Capacity		Max. 250 sheets face-down			
		Consumables & Options			
Toner Kit (Page Yield in accordance with ISO/ IEC 19752)		TK-1255 (3,000 pages)		TK-1265 (7,200 pages)	
Capacity of Start up Toner		1,000 pages		3,600 pages	
Maintenance Kit		MK-1265 (60,000 pages*) (Except Taiwan, Korea, Philippines)		MK-1265 (70,000 pages*) (Except Taiwan, Korea, Philippines)	
Paper Feeder		PF-1100: 250 sheets (Max. x2)			
Card Authentication		Card Authentication Kit(B)			

* The yield of maintenance kit is according to each model's specifications



KYOCERA Document Solutions Asia Limited

13/F, Mita Centre, 552-566 Castle Peak Road,
Tsuen Wan, N.T., Hong Kong
Tel : +852-2496-5678 / Fax: +852-2610-2063

www.kyoceradocumentsolutions.asia